



Child Criminal Exploitation Strategy and Procedures

Contents

1. Definition and Position Statement	1
2. Governance and Strategic Leadership	2
3. Data, Intelligence, and Communication	3
4. Prevention, Awareness Raising and Training	4
5. Procedures; What to do if you are concerned about Criminal Exploitation	5
6. Operational Task Groups	6
7. Safeguard and Preventative Interventions	7
Appendix 1: Exploitation (CSE / Criminal Exploitation) Risk Assessment and Management Tool	9
Appendix 2: Child Criminal Exploitation Referral Process	15

1. Definition and Position Statement

It is important to define what we mean by criminal exploitation and agree this definition as a multi-agency partnership. The partnership across Cambridgeshire and Peterborough includes, Peterborough City Council, Cambridgeshire County Council, Cambridgeshire Constabulary, Cambridgeshire and Peterborough Foundation Trust, the Office of Police and Crime Commissioner, The National Probation Service, Community Safety Partners and the voluntary sector.

The above partnership is committed to the following definition:

'We recognise that concerns exist with regard to children and young people who are used, through whatever means, to engage in criminal activity by other young people or adults who are able to coerce them to do so. The young people involved may not identify themselves as being 'exploited' as such, but it is clearly to their detriment that they are involved in this type of activity' – (Knowsley Safeguarding Board, 2017)

It needs to be understood and acknowledged by all professionals that young people are subjected to significant pressure and coerced into criminal activity and, as such, feel they have no choice other than to follow the instructions of those who are exploiting and therefore subjecting them to abuse.

'County Lines is a national issue involving the use of mobile phone and train 'lines' by groups to extend their drug dealing business into new locations outside of their home areas. This issue affects the majority of forces. A 'county lines' enterprise almost always involves exploitation of vulnerable persons; this can involve both children and adults who require safeguarding' – (National Crime Agency, 2015)

The MET Police Force knows that there are 721 active county lines running in England and Wales with active lines in Cambridgeshire, including Huntingdon and Peterborough.

Young people who are victims of Child Criminal Exploited (CCE) include those who are:

- Trafficked within the UK with the intention of being used to commit criminal acts that benefit the trade of drug and criminal gangs
- Coerced into the supply, transporting and dealing of class A Drugs. They may be doing this within their local area, however they are often crossing one or more police force and local authority boundaries
- Coerced into carrying drugs, weapons and money to assist in the trade and movement of drugs

CCE often occurs without the child's immediate recognition, and with the child believing that they are in control of the situation. In all cases, those exploiting the child/young person have power over them by virtue of their age, gender, intellect, physical strength and/or economic or other resources. Violence, coercion and intimidation are common, involvement in exploitative relationships being characterised in the main by the child or young person's limited availability of choice resulting from their social/economic and/or emotional vulnerability.' The criminal exploitation of children includes a combination of:

- **Pull factors:** Children/young people performing tasks for others resulting in them gaining accommodation, food, gifts, status or a sense of safety, money or drugs; often the hook is through the perpetrator supplying Class B drugs such as cannabis to the child/young person.
- **Push factors:** Children escaping from situations where their needs are neglected and there is exposure to unsafe individuals, where there is high family conflict or the absence of a primary attachment figure.
- **Control:** Brain washing, violence and threats of violence by those exploiting the child/young person, particularly when the child/young person is identified by the police, and is expected to take full responsibility for the offences for which they are charged – i.e. possession and supply of illegal substances.

The majority of children or young people who enter into exploitation do so willingly. However, their involvement is indicative of coercion or desperation rather than choice. Many young people do not recognize that they are being exploited or that they are at risk. The majority of children who are vulnerable to criminal exploitation are male, but the possibilities of female involvement should not be dismissed. It is important to note that perpetrators of CCE may themselves be children who are criminally exploited and that the victims of CCE may also be at risk of becoming perpetrators.

The cycle and pattern of exploitation requires agencies to work collaboratively to ensure that criminal exploitation is a clear safeguarding and community safety priority. We must also work in partnership with London and neighbouring regional local authorities to support cross board operations and safeguarding of vulnerable young people.

2. Governance and Strategic Leadership

The criminal exploitation of children and young people is the responsibility of the Cambridgeshire and Peterborough Safeguarding Board and Countywide Community Safety Partnership. The multi-agency partnerships are expected to work together across safeguarding and community safety ensuring that young people are supported to safely identify ways to exit and withdraw from criminal exploitation. Young people must also be supported to carefully disclose information so perpetrators are held accountable and brought to justice. The partnership will ensure that safeguarding responses and procedures are put into place to safeguard, protect and prevent young people from exploitation. These procedures will sit parallel with our response to Child Sexual Exploitation (CSE). Where possible, agencies should ensure that young people are not criminalised and prosecuted, with such action only used as a last resort.

"Children who are exploited and groomed for criminal purposes are equally as deserving of support. The language of 'criminal exploitation' is rarely understood and therefore those affected are not offered the same response. All forms of exploitation should be considered in the same way, with an understanding of grooming and vulnerability. The learning and best practice in place around CSE should be extended to include victims of all forms of exploitation – (Missing People, 2017)

A Strategic Child Criminal Exploitation Group will include the Police, Children's Social Care, Youth Offending Service, Targeted Youth Support Service, Early Help, Cambridgeshire and Peterborough Foundation Trust, Community Safety Partnership representative and the National Probation Service. The partnership is responsible for ensuring that appropriate processes are in place to disrupt and detect those responsible for criminal exploitation, and also ensure that modern day slavery and trafficking legislation is applied. In addition, the group must also be confident that procedures are in place to identify children and young people at risk and safeguard them from potential harm.

A multi-agency action plan (**Appendix 3. Exploitation Action Plan**) will be monitored and reviewed by both the Cambridgeshire and Peterborough Safeguarding Children's Board and Countywide Community Safety Partnership to ensure that where possible, young people are safeguarded and that perpetrators are brought to justice. The Strategic Group will be responsible for communicating their CCE strategic objectives and Action Plan to partners at a district, unitary and county level.

The key objectives of the Strategic Group and Multi-agency Action Plan will be:

- Prevent young people becoming at risk and raise awareness of Criminal Exploitation
- Identify and safeguard victims of CCE
- Identify and monitor vulnerable locations across the area
- Empower those affected by criminal exploitation by supporting them to identify strategies to exit and withdraw safely
- Disrupt perpetrators and bring them to justice using modern day slavery and trafficking legislation
- Maximise operational solutions with local, regional and national partners to disrupt county lines and reduce associated criminal exploitation and youth violence

3. Data, Intelligence, and Communication

The Multi-agency Partnership will be responsible for ensuring that a local intelligence tool is used to identify vulnerable cohorts of children and young people. Children's Services will be responsible for reviewing this tool and keeping it up to date.

If children or young people are identified as being at risk of, or involved in CCE they will be assessed using the Exploitation (Criminal and CSE) Risk Assessment and Management Tool (**Appendix 1: Exploitation (Criminal and CSE) Risk Assessment and Management Tool**)> these cases will then be recorded on the Multi-Agency Exploitation Tracker and will be identified as an:

- Emerging Risk
- Moderate Risk
- Significant Risk

The CCE cases on the Exploitation Tracker Tool will be shared with Cambridgeshire and Peterborough partners through MACE Meetings. It will also be shared with Single Points of Contact (SPOC) in the MET Police Force, London YOTs, London Borough Local Authorities, Regional Police Forces, Regional YOTs and Regional Children's Services.

If a regional and national tracker recording tool is identified, and available to record CCE children and young people, then the Cambridgeshire and Peterborough partnership should use this tool and implement it where possible. This will seek to assist in solutions with local, regional and national partners to disrupt county lines and reduce associated exploitation and violence.

Cambridgeshire and Peterborough will identify a SPOC in all key agencies to assist in protecting and safeguarding young people across local authority and police borders. These Single Points of Contacts must be identified in the following agencies:

- **Police** – 1 x Police MET HUB Detective Sergeant, 2 x Area Community Policing Detective Inspector
- **Children's Social Care** – MASH Head of Service
- **Youth Offending Team** – Service Manager YOS
- **Targeted Youth Support Service (TYSS)** – Service Managers
- **Early Help** – Early Help Head of Service
- **Health** – Lead Safeguarding Nurse
- **National Probation Service** – MASH Probation Officer

Cambridgeshire Constabulary will be responsible for maintaining a list of all those suspected nominals involved in Criminal Gangs/Organised Crime who are exploiting children and young people. This list may include children and young people themselves who are currently or have previously been victims of CCE as it is possible to be involved as a victim and a perpetrator. This list of adult nominals and young people will be discussed and action agreed within Serious Organised Crime Panels.

All partners must ensure that their staff are familiar with how and when to report concerns and intelligence regarding CCE to the police. The Constabulary will ensure that processes are in place to allow partners to report intelligence and this will then be collated and responded to appropriately.

4. Prevention, Awareness Raising and Training

Preventing young people from becoming involved in criminal exploitation is crucial if the cycle of county lines and gang-related violence is to be broken. The strategic group will be responsible for ensuring training is provided across the partnership to enable practitioners to be skilled in identifying criminal exploitation, and knowledgeable about how to respond appropriately to safeguard children and young people.

A programme of training is to be delivered across all schools in Cambridgeshire and Peterborough to allow the education workforce to be fully integrated with work across the areas in respect of tackling and responding to Criminal Exploitation. This training should include specific training with staff within Pupil Referral Units, the County Schools and Residential Units as a result of the vulnerabilities relating to these cohorts of young people.

Training should be delivered to all staff across services working with children and young people. The partnership should ensure that this is delivered in an effective way through identifying training that can be cascaded as well as appropriate online training modules. The Strategic Group will be responsible for approaching relevant Safeguarding and Community Safety Boards to identify funding to support the rollout of appropriate training for the workforce.

Training for the workforce should include:

- Recognising the signs of CCE in children and young people
- Awareness of vulnerable locations across the area
- Association between CCE and Child Sexual Exploitation and Radicalisation
- How to share intelligence relating to CCE concerns
- Procedures relating to safeguarding and protecting children and young people from CCE
- Knowledge of thresholds and processes for accessing available support and interventions for those at risk of CCE
- Preventative CCE interventions for those within Early Help Services

- Intensive safeguarding CCE interventions for those within Youth Offending and Social Care Services

The partnership will also be responsible for raising awareness regarding CCE amongst children and young people themselves, so we can prevent young people from becoming exploited at the earliest point. Preventative programmes should be delivered in schools, and where possible to parents and professionals. The Strategic Group will be responsible for approaching relevant Safeguarding and Community Safety Boards to identify funding to support the delivery of awareness raising programmes for children and young people.

The training and awareness programme for CCE will be supported by Cambridgeshire and Peterborough Safeguarding Board.

5. Procedures; What to do if you are concerned about Criminal Exploitation

The Exploitation (Criminal and CSE) Risk Assessment and Management Tool should be completed when:

- A professional or group of professionals is concerned that a child is at risk of becoming, or is currently being, criminally exploited
- A parent/caregiver is expressing concern to professionals that their child is at risk of becoming, or is currently being, criminally exploited
- A child is indicating that they are at risk of becoming, or are currently being, criminally exploited

The Exploitation Tool can be used:

- To gather information to help decide the level of risk and whether a referral needs to be made to the Cambridgeshire and Peterborough MASH
- To decide what the assessed needs are, and tailor plans to address risks and concerns if cases are already open to appropriate level services
- Alongside an Early Help assessment if there are clear indicators of multiple and complex needs and medium risk concerns in relation to CCE
- Alongside a Single Assessment if a Social Care referral has been progressed as there are clear indicators of high level needs and risks of CCE
- Alongside a Youth Justice Asset Plus Assessment to assist in risk management and oversight where there are CCE concerns and risks

All Exploitation Assessment and Management Tools must be forwarded to the CSE Consultant Social Worker (CSW) within the MET Hub at Cambridgeshire and Peterborough MASH.

Response to Exploitation (Criminal and CSE) Risk Assessment and Management Tool

All young people assessed as an Emerging Risk will meet the threshold for Early Help Services or TYSS Services and the appropriate agency planning and management processes will be followed.

Those assessed as Moderate Risk will meet the threshold for Early Help and/or YOS and/or TYSS and/or Social Care Services and will be subject to multi-agency safeguarding and/or safety and risk management (YOS/TYSS) processes. In addition they will receive support from the Missing, Exploited and Trafficked Hub Team (MET).

Those assessed as Significant Risk will meet the threshold for Social Care Services and/or TYSS Services in Peterborough and, in some cases YOS Services across both areas. They will be subject to multi-agency safeguarding and/or safety and risk management processes (YOS/TYSS). They will be discussed and receive additional oversight through the Multi-Agency Sexual and Criminal Exploitation Group (MACE). Significant cases will also have access to specialist CCE interventions.

(Appendix 2: Child Criminal Exploitation process flow chart below)

Young people arrested and CCE concerns present

When a young person is arrested and there are concerns that a child or young person may have been criminally exploited, the Police and Local Authority should, from the first point of contact with the young person, pursue a safeguarding, rather than criminal justice, response.

If a young person is arrested and there are suspicions that they are involved in criminal exploitation, this should trigger a concern about their welfare. In addition if a young person is arrested for drugs offences a long way from home in an area where they have no local connections and no obvious means of getting home, this should trigger concerns about their welfare and they should potentially be treated as victims of child criminal exploitation and trafficking rather than as an offender. Agencies should also make contact with statutory services in the young person's home area to share information.

Where the young person is charged and the case is brought to court, if instructed that the defendant has been a victim of exploitation, their solicitor should raise a defence under [section 45 of the Modern Slavery Act 2015](#).

At this stage the case should be adjourned to allow the assessment process to be undertaken through the National Referral Mechanism (NRM).

The young person should be referred via the National Referral Mechanism (NRM), if this has not already been done by Police or the Local Authority.

Where the young person is from another local authority area, information should be passed to Children's Social Care and/or the Youth Offending Team from the responsible area so that they can complete the referral process.

Once complete, the [referral form](#) should be sent to nrm@nca.x.gsi.gov.uk.

6. Operational Task Groups

Operational Strategy Groups will be responsible for ensuring that partners are following processes to prevent and safeguard young people from exploitation and detect, disrupt and prosecute perpetrators.

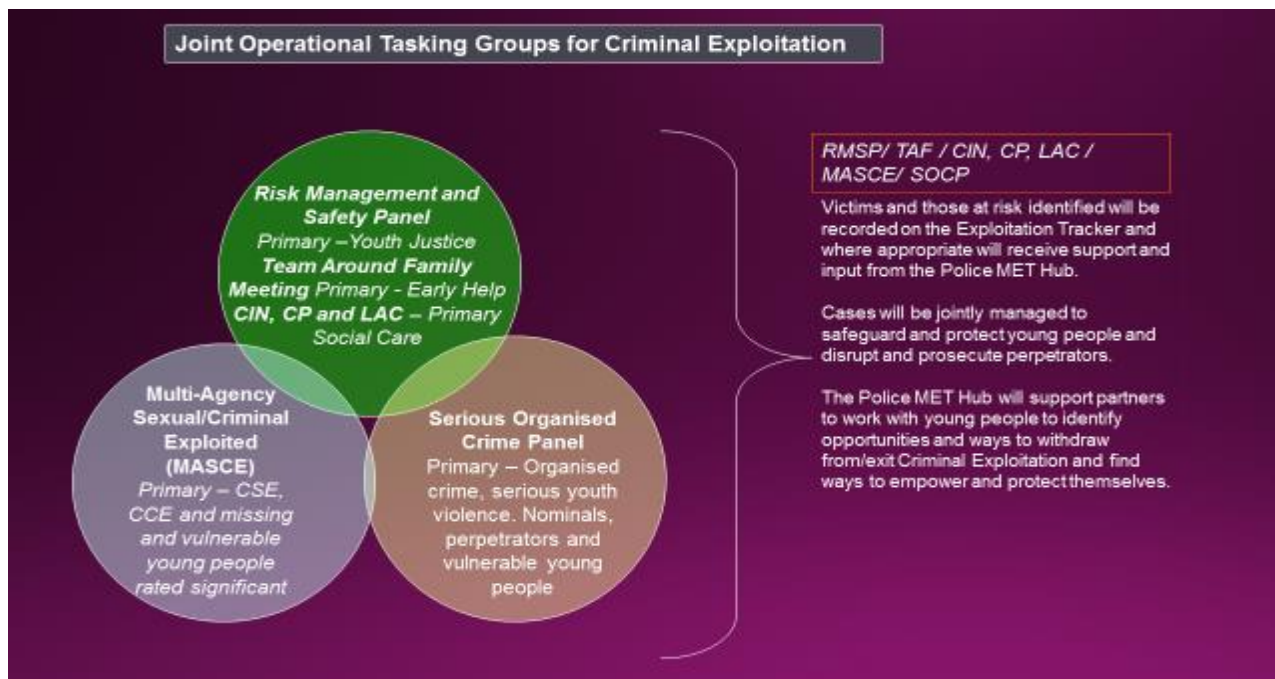
Operational groups to manage victims and perpetrators will exist in 3 formats and will work collaboratively together:

1. Day to Day Case Management

- **Risk and Vulnerability Management Meetings** - Youth Justice, TYSS and 14-25 Service for emerging, moderate, significant cases
- **Team Around the Family Planning Meeting and Early Help Plans** - District Early Help Services for emerging or moderate cases
- **Child in Need, Child Protection or Children Looked After Meetings and Plans** - Social Care and TYSS for emerging, moderate and significant case discussed, monitored, actions and management plans agreed

- ### 2. Multi-Agency Criminal Exploitation Group
- Monthly multi-agency partnership meeting, where vulnerable cohort of children and young people identified as significant risk are discussed and multi-agency actions and risk management agreed where appropriate with tasks assigned to agencies

3. **Serious Organised Crime Panel** - Monthly multi-agency partnership meeting, where organised crime group nominals, and vulnerable young people who are involved are discussed. Ways to disrupt and prosecute agreed and actioned. Tasks assigned to agencies



7. Safeguard and Preventative Interventions

The Strategic Governance Group and wider partnership must ensure that interventions are available to safeguard and protect vulnerable people, who are victims of CCE. It is known that harm is often hidden and the full circumstances surrounding a vulnerable person are not initially understood. When the potential for harm is identified we must ensure that an effective intervention can be put in place.

Interventions should include:

Preventative interventions that stop disadvantaged young people becoming involved in criminal exploitation, organised crime and serious youth violence. Practitioners within Social Care, Early Help and Youth Offending Services should have access to interventions that:

- Offer practical tools and knowledge to children and young people on how to steer clear from exploitation, violence and organised crime
- Offer practical tools and knowledge to parents/carers to support children and young people to avoid exploitation, violence and organised crime

Safeguarding interventions that work to protect young people already involved in CCE, violence and crime. Practitioners within intensive support services in Youth Offending and Children’s Social Care Services should have access to interventions that:

- Offer intensive help to young people exposed to exploitation, violence and organised crime
- Offer intensive support to parents/carers exposed to exploitation, violence and organised crime
- Help young people to understand child exploitation and human trafficking and work with them to find solutions and alternative choices
- Provide mentors for young people who can offer real understanding of the situations they face and can relate to the experiences they are going through

- Help young people to understand the dangers of being in a gang and signpost and engage them in alternative positive activities
- Offer trauma based interventions to young people who have experienced serious criminal exploitation and youth violence

The Strategic Governance group and wider partnership is responsible for ensuring that there are resources and funding to provide the above interventions.



Appendix 1: Exploitation (CSE / Criminal Exploitation) Risk Assessment and Management Tool

Name/Role of Person Completing this Assessment			
Date			
Child or young person's name		YOS Involvement (Yes / No / Previous)	
Gender		Known to Police (Yes / No)	
DOB & AGE		CAMH (Yes / No / Previous)	
Ethnicity		Education Placement (Name of School)	
ICS No		Current Attendance (%)	
Legal Status (i.e. S17, S47 CP Plan, S31, Targeted services)		SEND (Yes/No)	
Home Address (Address / Postcode)		Alcohol Misuse (Yes/No, Suspected)	
Accommodation Type (i.e. Home, Residential, Foster Care, Friends & Family, Supported Lodgings)		Substance Misuse (List any known drugs used)	
EXPLOITATION RISK CATEGORIES			
1. Running Away / Going Missing	EMERGING	Regularly coming home late / Absent without permission / Returning late to care home / Absent from school / Whereabouts often unknown	
	MODERATE	Frequently staying out overnight without permission / Episodes of running away, MFH, missing from placement / Looking well cared for despite having no known base? / Regular breakdowns of placement due to behavioural problems	
	SIGNIFICANT	Persistently running away, going Missing from House or placement / Pattern of street homelessness / Whereabouts often unknown or of significant concern, talks about and/or known to travel to different areas or cities	
	Evidence/Professional judgement		Action required to mitigate risk inc who is responsible for each action
2. Coercion / Control	EMERGING	Recent change in peer group / Reduced contact with family/friends / Late night phone/internet contact	
	MODERATE	Secretive about having a mobile phone or more than one / Extensive use of mobile phone/internet / Late night phone/internet contact / Limited contact with family/friends /	
	SIGNIFICANT	Secretive about having a mobile phone/more than one / Disclosure of or police intelligence regard physical/sexual assault followed by withdrawn allegation/reluctant to report / No contact with family/friends / Disappear from system (no contact with support systems)/ Disclosure of or police intelligence relating to county lines/gang activity involvement or links, talks about having drug debts and an urgent need for money. Family report hostile acquaintances coming to the door or telephoning/messaging and making threats.	
	Evidence/Professional judgement		Action required to mitigate risk inc who is responsible for each action

Cambridgeshire and Peterborough Multi-agency Exploitation (CSE / Criminal Exploitation) Risk Assessment and Management Tool

3.Contact with Abusive Persons and/or Risky Environments	EMERGING	Some association with unknown adults and/or other sexually exploited children and/or missing children / Some association with manipulative peers/ Some association with gang and county lines involved adults or peers	
	MODERATE	Associating with unknown adults and/or other sexually exploited children/young people and/or missing children /Information and Police Intelligence suggesting involvement in sexual exploitation / Spending time in areas where CSE and/or street sex work is known to have taken place / Associating with possible county lines or gang members/ Getting into cars with unknown adults or suspected perpetrators of CSE / New or expensive possessions which cannot be accounted for / Access to cash/money, spending time in areas where drug activity known to take place or fearful of going to certain areas.	
	SIGNIFICANT	Identifying as a county lines or gang member / Found in areas/properties known for CSE/street sex work/drug activity/ Evidence or Police Intelligence to suggest being moved around for sexual activity / Abducted and forced imprisonment (described by young person as "locked in")	
	Evidence/Professional judgement		Action required to mitigate risk inc who is responsible for each action
4.Substance Misuse	EMERGING	Experimenting with alcohol/cannabis / Associating with young people known to use substances regularly	
	MODERATE	Regular use of or recent increase in use of substances / Use of drugs in addition to alcohol/cannabis (e.g. MDMA, cocaine) / Concerns for drug dependency / Associating with known drug dealers / Seen in known areas for selling drugs/ Seen associating with young people who are running and involved in drug lines	
	SIGNIFICANT	Evidence of dependency on alcohol/drugs / Using opiates (e.g. heroin, codeine, methadone) / Injecting of any substance / Dealing of substances / Found in areas/properties known for drug activity/ Supply of substances to others / CSE activity for paying off of debts e.g drug debt/ known to be actively involved in networks that run drug lines	
	Evidence/Professional judgement		Action required to mitigate risk inc who is responsible for each action
5.Education	EMERGING	Mainly engaged in education, employment or training/ Some attendance/behaviour issues/ Poor educational achievement	
	MODERATE	Irregular/poor attendance / Truanting from school / Losing interest in education / Periods of exclusion(s) / Whereabouts during school hours unknown/ Poor educational achievement	
	SIGNIFICANT	Not in Education, training or employment / Regular breakdown of school placements due to behavioural problems/ Whereabouts during school hours unknown and information suggesting links to CSE/County Lines or Gangs/ Poor educational achievement	
	Evidence/Professional judgement		Action required to mitigate risk inc who is responsible for each action
6.Use of social media/technology	EMERGING	Talking to/communication with unknown adults/peers via the internet / Lack of awareness of online safety (young people and parents/carers)	
	MODERATE	Use of internet to share inappropriate or sexual images / Meeting in person, adults or peers following contact via social media./Concerns young person may be being groomed / Extensive/secretive use of internet	
	SIGNIFICANT	Use of internet to regularly meet in person unknown adults/peers for sexual activity / Evidence of sexual bullying through social media/internet / Evidence of sexual material being shared online without young person's consent	
	Evidence/professional judgement		Action required to mitigate risk inc who is responsible for each action

Cambridgeshire and Peterborough Multi-agency Exploitation (CSE / Criminal Exploitation) Risk Assessment and Management Tool

7. Sexual Health / Sexualised Risk Taking	EMERGING	Sexually transmitted infections (STI's) / Access to and engagement with sexual health services	
	MODERATE	Multiple / untreated sexually transmitted infections (STI's) /Inappropriate sexual activity with peers or adults / Information from peers and/or community highlighting concerning sexual activity / Frequent use of emergency contraception	
	SIGNIFICANT	Repeated pregnancy/miscarriages and/or terminations / Inappropriate/exploitative sexual activity with peers/adults / Disclosure of sexual activity with boyfriend/girlfriend's peers/ Others having knowledge that sex can be exchanged for money and/or goods / Relationship with suspected/known CSE perpetrators	
	Evidence/professional judgement		Action required to mitigate risk inc who is responsible for each action
8. Emotional & Physical Health	EMERGING	Low self-esteem / Some or reduced concerns of self-harm and/or eating disorders / Difficulty in making or maintaining friendships with peers	
	MODERATE	Low self-esteem impacting upon young person's mental health / Increased concerns of self-harm / Violent/emotional outbursts or bullying or threatening behaviour / Offending behaviour / Difficulty in making or maintaining friendships with peers/ Concerns young person may be exposed to violence	
	SIGNIFICANT	Chronic low self-esteem / Changes or extremes in mental health / Suicidal ideation /Evidence of emotional abuse from domestic violence, as witness or victim / Evidence of self-harm, eating disorders, previous suicide attempts or overdoses / Frequent attendance at A&E / Physical symptoms suggestive of sexual physical assault	
	Evidence/professional judgement		Action required to mitigate risk inc who is responsible for each action
9. Accommodation and family relationships	EMERGING	Accommodation generally meets needs of young person/ Support available from family/parent/carer / Communication within home environment is good/ known peers/older sibling involved in drug distribution/county lines/gangs	
	MODERATE	Overcrowding / Living with other young people who are considered to be at risk of CSE / Evidence of decline in relationship and/or communication with family/parent/carer, known peers/older siblings who are suspect to have county lines debts, lack of parental supervision or interest in the young person	
	SIGNIFICANT	Homeless or sofa surfing / Young person often stays elsewhere/ Lack of relationship/understanding or trust / Family/friends/peers are known or suspected perpetrators of CSE/ Known, parent is unavailable to them physically or emotionally	
	Evidence/professional judgement		Action required to mitigate risk inc who is responsible for each action
10. Offending/Weapons/ Criminal Activity	EMERGING	Coming to the attention of the police/ Concerns about being involved with offending peers or associates/ being in possession of cannabis/ Talked about or considered carrying a weapon	
	MODERATE	Known to be involved in drug related offending/ Police intelligence indicating/ Arrested by the police/charged/ investigated for offences of possession of offensive weapon/ Possession of drugs/ Theft. Known to be connected with drug distribution networks and lines	
	SIGNIFICANT	Significant intelligence indicating/Charged or convicted of Robbery/Use of offensive weapon/ possessions of large quantities of drugs/ Known to be active with drug distribution networks and lines/ recruiting other to run drug lines and to organised crime/ Witness withdrawing statements and suspecting intimidation	
	Evidence/professional judgement		Action required to mitigate risk inc who is responsible for each action

11. Community/Social Isolation Factors	EMERGING	Emerging – Is the young person vulnerable to or experiencing low levels of social isolation that may be exacerbated as a result of Deprivation (including a perceived inability or reluctance to access more mainstream support)/ their Ethnicity/ cultural background/cultural dissonance/ being a Child Looked After/ identifying as Lesbian, Bisexual, Gay or Transgender (LBGT)/ their Special Educational Needs (SEND)/ Poor educational achievement or other factors. Some protective community factors present and support evident.	
	MODERATE	Is the young person experiencing moderate levels of social isolation that may be exacerbated by Deprivation/ their Ethnicity/ cultural background/ cultural conflict, being a Child Looked After/ identifying as Lesbian, Bisexual, Gay or Transgender (LBGT)/ their Special Educational Needs (SEND)/ Poor educational achievement or other factors? Some community protective factors are present but the young person is reluctant to access them. Starting to socialise with or take an interest in pro-offending groups. Aspires to be part of a local gang or anti-social group.	
	SIGNIFICANT	Significant – Is the young person experiencing high levels of social isolation that may be exacerbated by deprivation (including being part of an inward-looking community)/ their Ethnicity/ cultural background/ cultural conflict/ being a Child Looked After/ identifying as Lesbian/ Bisexual, Gay or Transgender (LBGT)/ their Special Educational Needs (SEND)/ Poor educational achievement or other factors? Are they being targeted by groups or individuals due to their vulnerability? Are they seeking inclusion/recognition from pro-offending peers or communities? Lack of community protective factors or disengagement by young person. Known to be an active participant in a local gang or anti-social group.	
	Evidence/professional judgement		Action required to mitigate risk inc who is responsible for each action
Any other information to support Risk Assessment	You may wish to use this box to summarise the actions required to mitigate the risk to the young person.		

Risk Assessment

Child Sexual Exploitation Risk (Please tick level, leave blank if NA)		Child Criminal Exploitation (Please tick level, leave blank if NA)	
EMERGING		EMERGING	
MODERATE		MODERATE	
SIGNIFICANT		SIGNIFICANT	

Next Steps - On completion of the Risk Assessment and Management Tool, please make a professional judgement about the level of risk of child sexual exploitation to the young person. Please tick against your assessed level on the front page and discuss with your line manager around appropriate next steps.

<p>Emerging Risk</p> <p><i>A vulnerable child who is at risk of being targeted and groomed for exploitation</i></p>	<p><i>Some evidence that the child or young person is at risk of exploitation and / or places him/herself at risk. Some concerns that the child/ young person is at risk of being targeted or groomed, but there are positive protective factors in the child's life. The child / young person may require a referral to targeted early intervention services for education / intervention.</i></p> <p>PETERBOROUGH: Continued support from single agency completing this tool might be the most appropriate course of action. An Early Help Assessment may be deemed appropriate if the needs cannot be met by a single agency or that agency is 'stuck'. This can then be shared with the Early Help Team who will decide whether or not the case should go to the local Multi Agency Support Group (MASG). If appropriate ensure information gathered to complete this assessment is shared with other agencies already working with the young person/family. Consider a professionals meeting for this purpose. Keep records as to new incidents and risk indicators and monitor any changes in vulnerability which may result in increased risk of Child Sexual/Criminal Exploitation (CS/CE) in the future.</p> <p>CAMBRIDGESHIRE: Continued support from single agency completing this tool might be the most appropriate course of action. Intervention may be based on preventative diversionary work i.e. Early Help Plan, coordinated response from the following key agencies; YOS prevention or statutory disposal, Education, Sexual Health worker, CASUS - Young Persons Drug & Alcohol Service, Housing, Voluntary Sector, Faith based community support. Youth Worker, Family Worker, School Nurse. Work with children, young people and families to develop an awareness of the risks that can lead to a situation in which they may be exposed to sexual exploitation. Keep records as to new incidents and risk indicators and monitor any changes in vulnerability which may result in increased risk of Child Sexual/Criminal Exploitation (CS/CE) in the future.</p>
<p>Moderate Risk</p> <p><i>A vulnerable child who may be targeted for opportunistic abuse.</i></p>	<p><i>Child is vulnerable to being exploited / but there are not immediate/ urgent safeguarding concerns. There is evidence the child / young person may experience protective factors, but circumstances and / or behaviours place him/her at risk of exploitation.</i></p> <p>PETERBOROUGH: If child not open to Children's Services, referral to be made to MASH – pdscsc@peterborough.gcsx.gov.uk Consideration to be given to holding a strategy discussion to review the current safeguarding concerns or referral to be progressed through for a single assessment to be undertaken to fully explore risks.</p> <p>CAMBRIDGESHIRE: If child not open to Children's Services, referral to be made to MASH – MASH@Cambridgeshire.gcsx.gov.uk Consideration to be given to holding a strategy discussion to review the current safeguarding concerns or referral to be progressed through for a single assessment to be undertaken to fully explore risks.</p> <p>Intervention with the children, young person and families to address risk awareness and staying safe should be undertaken. A planned programme to raise awareness of exploitation and to provide tools for children and young people to self-protect is required. Coordination with Police regarding missing episodes and independent return home visits to be completed. Disruption tactics to be considered including consideration via criminal and civil proceedings to disrupt perpetrators. Consideration also to be had around impact upon the family, risks to younger siblings. For County lines if not open to YOS statutory disposal, a YOS prevention referral should be considered.</p> <p>Any significant change in circumstances should lead to a review of risks.</p>

<p><u>Significant Risk</u></p> <p><i>A child who may be targeted for opportunistic abuse through exchange of sex for drugs, accommodation, goods etc.</i></p> <p><i>OR</i></p> <p><i>A child who is at significant risk or is already being sexually exploited. Sexual exploitation is likely to be habitual, often self-denied and coercion and control is implicit.</i></p> <p><i>A child who is being exploited by gang members and is being coerced into the moving / selling of drugs?</i></p>	<p><i>Evidence / disclosure suggests that the child is at immediate and / or continuing risk of sexual exploitation. The child / young person is engaged in high risk situations / relationships / risk taking behaviour. Evidence / assessments, suggests that the child is experiencing exploitation (they may not recognise this).</i></p> <p>PETERBOROUGH: If child not open to Children’s Services, referral to be made to MASH –pdscsc@peterborough.gcsx.gov.uk Professionals completing the assessment MUST seek advice from the allocated Social Worker if the case is open to Children’s Social Care, or the MASH hub if not. Complete the Child Protection referral form, ticking the CSE box on page 1 and attach this assessment, making it clear that it is believed there is a risk of significant harm to ensure a strategy discussion can be held within 24 hours. Send to: pdscsc@peterborough.gcsx.gov.uk If it is felt that the child is at immediate risk of harm, the Police must be contacted on 101.</p> <p>CAMBRIDGESHIRE: If child not open to Children’s Services, referral to be made to MASH - MASH@Cambridgeshire.gcsx.gov.uk If child has an allocated social worker, social worker will notify Unit Consultant Social Worker to initiate a strategy discussion/meeting as part of S47/CP/CIC process and will invite MET Hub staff. Strategy discussion/meeting to be led/chaired by Unit Consultant Social Worker or Met Hub for non- open cases. Exploitation Risk Management Tool to be reviewed and updated in strategy meeting/discussion. If it is felt that the child is at immediate risk of harm, the Police must be contacted on 101.</p> <p>Intervention with the children, young person and families to address risk awareness and staying safe should be undertaken. A planned programme to raise awareness of exploitation and to provide tools for children and young people to self-protect is required. Coordination with Police regarding missing episodes and independent return home visits to be completed. Disruption tactics to be considered including consideration via criminal and civil proceedings to disrupt perpetrators. Safety plan and action to include long-term intensive direct work with the individual child or young person. Consideration for Health, Police, Children’s Services risk alerts. Cross referencing with links to other safeguarding issues such as Teenage Pregnancy and Domestic Violence strategies. Consultation with the UKHTC / UKBA where appropriate. Harm reduction / detox intervention to be offered to the child, young person and family. Consideration also to be had around impact upon the family, risks to younger siblings. For County lines immediate referral for YOS Prevention Intervention if not open to statutory disposal. Risk should be closely monitored and reassessed every 4 weeks as part of the risk reduction process.</p>
<p>CAMBRIDGESHIRE: Reviewed Exploitation Risk Assessment and Management Tool to be sent to CSE Coordinator on METHub@cambridgeshire.gov.uk for data collection purposes</p>	

To access a word version of the Exploitation Risk Assessment and Management Tool please visit our website or use the following link

<http://www.safeguardingpeterborough.org.uk/wp-content/uploads/2018/05/Exploitation-CSECCE-Risk-Assessment-Tool.docx>

Appendix 2: Child Criminal Exploitation Referral Process

