



# Safeguarding Partnership for Cambridgeshire and Peterborough

# Safeguarding Partnership Board Structure

Executive Safeguarding Partnership Board

Adult Safeguarding Partnership Board

Children Safeguarding Partnership Board

Consultation and Development Forum

Quality and Effectiveness Group

Safeguarding Adults Review Group

Task and Finish Groups

Consultation and Development Forum

Quality and Effectiveness Group

Case Review Group

Education Safeguarding Group / Child Protection Information Network

Health Safeguarding Group

# Financial Contributors to the Boards



# Executive Safeguarding Partnership Board

The Executive Partnership Board Is the overarching countywide Governance Board for both the children and adults safeguarding arena. The Board has statutory accountability for safeguarding across Cambridgeshire and Peterborough. It is made up of the ‘Strategic Directors’ for:

- ▶ The Local Authority
- ▶ Health
- ▶ Cambridgeshire Constabulary



# Adult Safeguarding Partnership Board

[www.safeguardingcambspeterborough.org.uk](http://www.safeguardingcambspeterborough.org.uk)



# Adults Safeguarding Partnership Board

Under the Care Act 2014 every local authority must set up a ASPB - a multi agency strategic partnership that is responsible for monitoring safeguarding adult's at risk practice. It is a key mechanism for ensuring effective partnership working.

The objective of the Adults Safeguarding Partnership Board is to help and protect adults at risk of abuse or neglect.

The ASPB must seek to co-ordinate agencies and ensure the effectiveness of what each of its members does.

# Adult Safeguarding Partnership Board

An ASPB will;

- Authorise the policy, process, strategy and guidance required to support Board priorities and effective safeguarding
- Publish a strategic plan that sets out how it will meet its main objectives
- Scrutinise, challenge and maintain an overview of adult safeguarding in Cambridgeshire and Peterborough
- Ensure that Safeguarding Adult Reviews (SARs) are undertaken in accordance with S44 of the Care Act 2014 and where necessary will oversee the SAR process.
- Assess whether partner agencies are fulfilling statutory obligations in relation to safeguarding adult's at risk
- Quality assure practice through joint audits of case files and identifying lessons to be learned
- Monitor and evaluate effectiveness of training, including multi-agency training

# Making Safeguarding Personal (MSP)

The ASPB is responsible for monitoring the implementation of “making safeguarding personal” at a local level and its impact on engagement and outcomes

Making Safeguarding Personal means adult safeguarding:

- ▶ is person-led
- ▶ is outcome-focused
- ▶ enhances involvement, choice and control
- ▶ improves quality of life, wellbeing and safety



**EMPOWERMENT, PREVENTION, PROPORTIONALITY, PROTECTION, PARTNERSHIP, ACCOUNTABILITY**



# Membership of The ASPB

- Independent Chair
- Cambridgeshire County Council
- Peterborough City Council
- District Council Representative
- The Cambridgeshire and Peterborough Clinical Commissioning Group
- Cambridgeshire Constabulary
- Fire and rescue
- Education Providers
- Voluntary sector
- National Probation Service
- BENCH
- Health and community services
- Lay Members



# ASPB Consultation & Development Forum



- ▶ Responsible for securing the for securing the “voice” of practitioners and ensuring that learning is used to inform and improve practice
- ▶ It will carry out this role within the meeting or by identifying responsible individuals as required.
- ▶ These groups have wider partner membership to include probation, health providers, education, voluntary sector, faith communities and housing.
- ▶ The sessions will run 3/4 times a year, each session will focus on one of the safeguarding boards priorities

# Subgroups and Current Task and Finish Groups - ASPB

- ▶ Training Subgroup
- ▶ Adult's Quality Effectiveness Group
- ▶ Learning Disabilities Mortality Review (LeDeR)
- ▶ District Council Safeguarding Group
- ▶ Safeguarding Adult Reviews Group (SARS)



# Children Safeguarding Partnership Board

[www.safeguardingcambspeterborough.org.uk](http://www.safeguardingcambspeterborough.org.uk)

# Key Legislation and Guidance – Safeguarding Children

- ▶ Working Together to Safeguard Children 2018 (A guide to interagency working to safeguard and promote the welfare of children) refers the duties of the local authorities (Section 11 of the Children Act 2004) in terms of multi-agency working to promote the welfare of children and how the Children and Social Work Act 2017 strengthens this by; placing new duties on key agencies. These key agencies are the; police, clinical commissioning groups and local authority
- ▶ Working Together 2018 also states that the guidance applies to *all* schools and applies to *all* children up to the age of 18 years
- ▶ The guidance sets out that ‘Safeguarding is Everyone’s Responsibility’ and refers to the new; multi-agency safeguarding arrangement (safeguarding partners (ch3)) and child safeguarding practice reviews (ch4)

# Children's Safeguarding Partnership Board

- ▶ The Children Safeguarding Partnership Board is responsible for progressing the Boards business priorities through the business plan and finalise the annual report.

The Board :

- ▶ Authorises multi-agency safeguarding policy, procedures, guidance and strategy required to support Board priorities and effective children safeguarding.
- ▶ Scrutinises, challenges and maintain an overview of children safeguarding in Cambridgeshire and Peterborough
- ▶ This constructive challenge is undertaken through quality assurance activity, learning and development programmes and commissioning and overseeing local Child Safeguarding Practice Reviews / other learning reviews/ methodologies (as required.)

# Children's Safeguarding Partnership Board

The work of the Cambridgeshire and Peterborough Children Safeguarding Partnership Board includes:

- ▶ Assessing the effectiveness of help provided to children and families, including early help
- ▶ Assessing whether partner agencies are fulfilling statutory obligations in relation to safeguarding children
- ▶ Quality assuring practice through joint audits of case files and identifying lessons to be learned
- ▶ Monitoring and evaluating effectiveness of training, including multi-agency training
- ▶ Developing and agreeing local policies and procedures; including action to be taken when there are concerns, thresholds for intervention and allegations against staff
- ▶ Raising awareness in the wider community of the need to safeguard children

# Membership of The CSPB

- Independent Chair
- Cambridgeshire County Council
- Peterborough City Council
- District Council Representative
- The Cambridgeshire and Peterborough Clinical Commissioning Group
- Cambridgeshire Constabulary
- Secondary and Primary Education Representatives
- Voluntary Sector
- National Probation Service
- CAFCASS
- BENCH
- Youth Offending Team
- Lay Members





# CSPB Consultation & Development Forum



- ▶ Responsible for securing the for securing the “voice” of practitioners and ensuring that learning is used to inform and improve practice
- ▶ It will carry out this role within the meeting or by identifying responsible individuals as required.
- ▶ These groups have wider partner membership to include probation, health providers, education, voluntary sector, faith communities and housing.
- ▶ The sessions will run 3/4 times a year, each session will focus on one of the safeguarding boards priorities

# Subgroups and Current Task and Finish Groups - CSPB

- ▶ Training Subgroup
- ▶ Children's Quality Effectiveness Group
- ▶ Case Review Group (Child Safeguarding Practice Reviews)
- ▶ Child Death Overview Panel
- ▶ District Council Safeguarding Group
- ▶ Education Safeguarding Group / Child Protection Information Network (CPIN)
- ▶ Child Criminal Exploitation Group
- ▶ Health Safeguarding Group

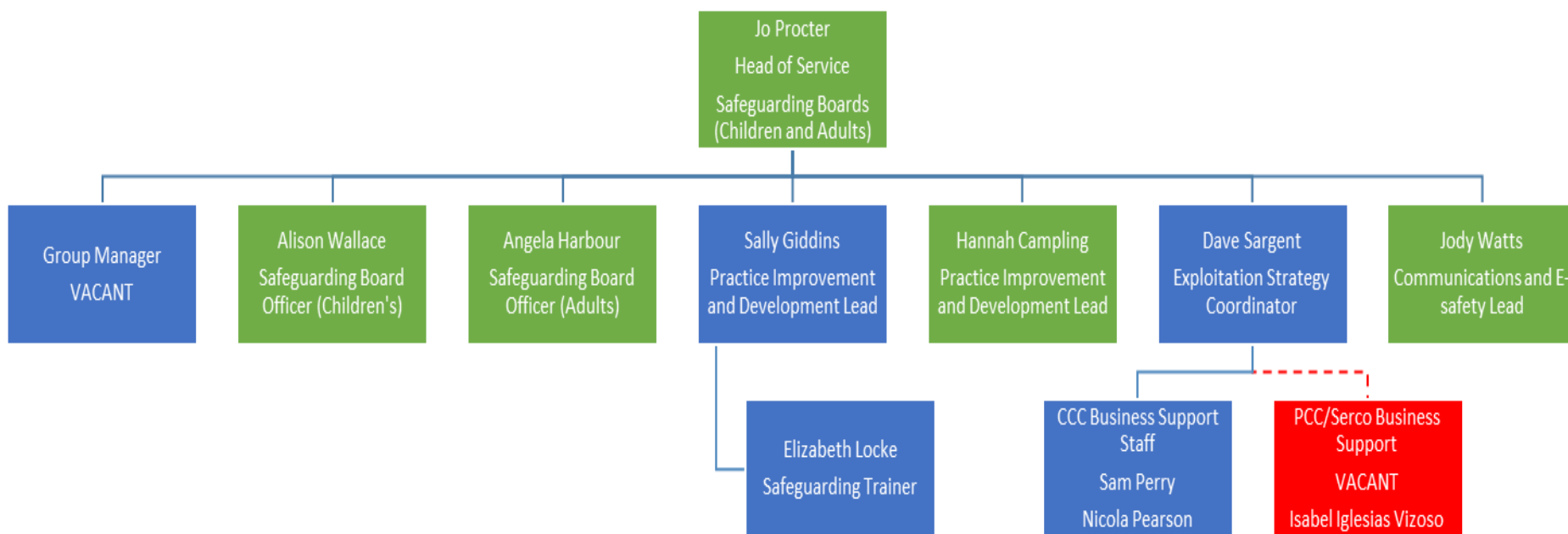


# Independent Safeguarding Partnership Service

# Independent Safeguarding Partnership Service for both Boards

- ▶ Replaces the Business Unit
- ▶ Is county wide across Peterborough and Cambridgeshire
- ▶ Covers both the Adults and Children arena and consists of :
  - Independent Chair (who chairs both the; Boards, Delivery Groups, Child Safeguarding Practice Review Group and Serious Adult Review Group)
  - Head of Service
  - Quality Assurance Improvement leads
  - Criminal Exploitation Lead
  - Children's Officer and an Adult Officer
  - Communications & E-safety Lead
  - Training Officer
  - Administrative Leads

# Independent Safeguarding Partnership Service



# Independent Safeguarding Partnership Service for both Boards

The role of the Independent Safeguarding Partnership Service is to:

- ✓ Oversee the work of the Safeguarding Boards
- ✓ Ensure representation of the boards is at all of the key statutory partnerships
- ✓ Independently scrutinise and have oversight of all multi-agency safeguarding practice
- ✓ Ensure that the safeguarding arrangements for both children and adults at risk are effective
- ✓ Assist and lead, where needed, in developing and writing safeguarding policies, procedures and guidance for the partnership
- ✓ Ensure that the work of the board is effectively highlighted to key stakeholders
- ✓ Consult with children, young people, their families and those adults in need of help and protection

# Our website is now in 104 languages

- ▶ [www.safeguardingcambspeterborough.org.uk/](http://www.safeguardingcambspeterborough.org.uk/)
- ▶ Just click on the translate button
- ▶ Lots of information, leaflets and guidance for professionals and parents/carer's and young people

